



Eli-spot Kit Contents :

- Capture and detection antibodies
- Enzyme conjugates for each amplification
- Buffers
- Blocking reagent
- Substrates for enzymatic detection
- With or without plates




Diacclone is what you need for research !

Always dedicated to providing you with all the necessary tools for your research needs, Diacclone is also pleased to offer a wide range of Elisa, Eli-pair kits and flow cytometry monoclonal antibodies to CD's, cytokines, cytokine and chemokine receptors, apoptosis related proteins and adhesion molecules.

Visit our Website www.diacclone.com

To have more information about our latest releases.



Eli-spot poster 

March 2002

Besançon - France

Diacclone Research : the most extensive range of Eli-spot on the market

For cytokine production analysis as close as possible to in vivo conditions with minimal cell manipulation

● Wide range of kits :

Human : Fas-L, IFN- γ , IL-1 β , IL-2, IL-4, IL-5, IL-6, IL-10, IL-12, IL-13, TNF- α

Mouse : IFN- γ , IL-2

Rat : IFN- γ , IL-4, TNF- α

● Size convenience :

1x96 demo, 5x96, 10x96, 15x96 or 20x96 tests

● Fast procedure :

Only 3h30 after cell stimulation

● Exclusive Dual Eli-spot line :

IFN- γ / IL-2, IFN- γ / IL-4, IFN- γ / IL5, IFN- γ / IL-10, IL-10 / IL-2, IL-10 / IL-4

● Flexibility :

Available with or without plates

Enzymatic or fluorescent detection

- Mono-cytokine detection
- Dual cytokine detection

PVDF or agarose support

● Affordable price :

Lowest prices on the market guaranteed



DIACLONE SAS
1, Bld A. Fleming
25000 BESANÇON - FRANCE

Tel. +33 3 81 41 38 38 Fax +33 3 81 41 36 36
E-mail : info@diacclone.com
Web site : <http://diacclone.com>

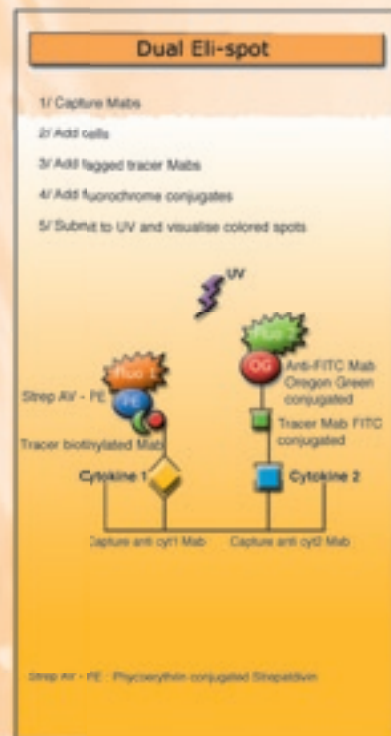
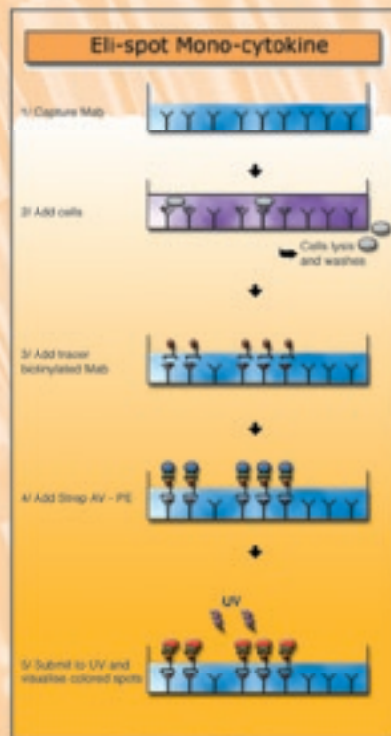
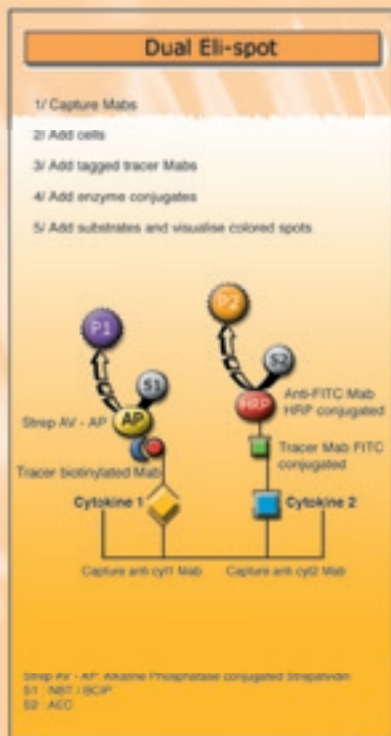
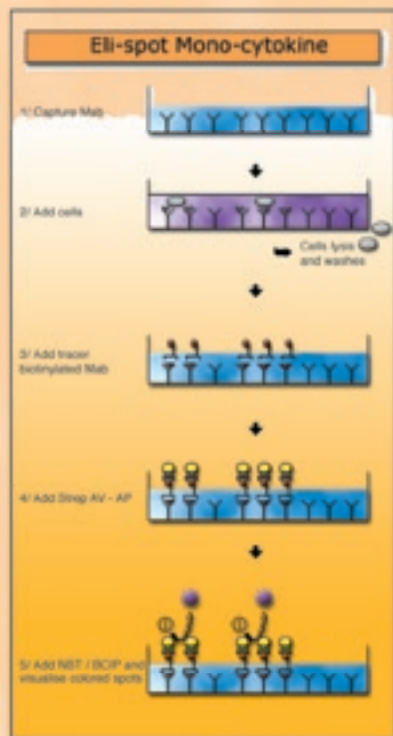




Eli-Spot Procedure Summary

Enzymatic detection

Fluorescent detection



Typical patterns of Eli-spot Enzymatic detection

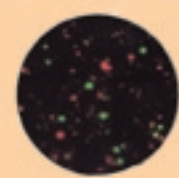
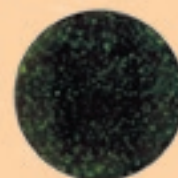
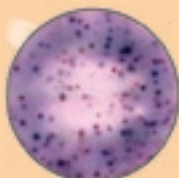
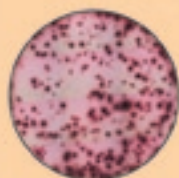
Typical patterns of Eli-spot Fluorescent detection

Mono-cytokine detection

Dual cytokine detection

Mono-cytokine detection

Dual cytokine detection



IFN γ production by PMA and Ionomycin stimulated PMNCs

IL-4 production by PMA and Ionomycin stimulated PMNCs

IFN γ (red) and IL-4 (blue) production by stimulated EBV transfected B-cells and activated T-cells

IFN γ production by PMA stimulated PMNCs (PE)

IL-10 production by PMA stimulated PMNCs (OG)

IFN γ (red) and IL-10 (green) production by stimulated EBV transfected B-cells and PMNCs

