

CD141 Antibody : B-A35 Unconjugate

HUMAN CD141 UNCONJUGATE

CATALOGUE N° : 854.583.020

CLONE : B-A35

ISOTYPE : Mouse IgG1

IMMUNISATION : TF1 cell line

HYBRIDOMA : Myeloma X63/AG.8653 x Balb/c spleen cells

SPECIFICITY : Recognises the thrombomodulin (TM), a 105 kDa protein

QUANTITY : 200 tests / 2 ml

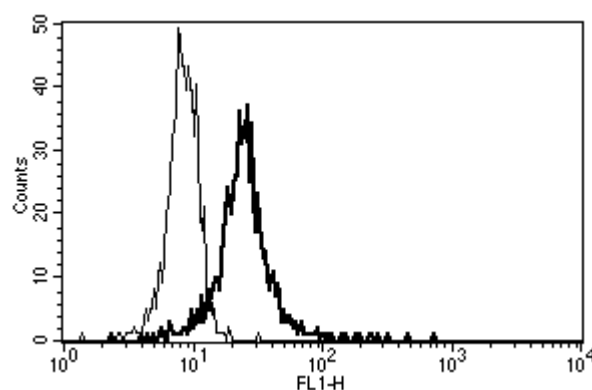
PURIFICATION : Ion exchange chromatography

FORMAT : Phosphate-buffered saline with 1 % BSA and 0.1 % sodium azide

WORKING DILUTION : Use 10 µl to label 10⁶ cells or 100 µl of whole blood

STORAGE : Stable at +2-8°C for 12 months. For longer storage, freeze aliquots

APPLICATION : Suitable for flow cytometry - Immunoprecipitation : not tested
Western blot : not tested - Immunohistochemistry : not tested



A typical staining pattern with the B-A35 monoclonal antibody of monocytes

☠ Sodium azide is a poisonous and hazardous substance, handle and dispose of properly