

CD14 Antibody : 8G3 PE conjugated

HUMAN CD14 PE CONJUGATED

CATALOGUE N° : 854.772.010

CLONE : 8G3

ISOTYPE : Mouse IgG2a

IMMUNISATION : Monocytes

HYBRIDOMA : Myeloma SP2/O x Balb/c spleen cells

SPECIFICITY : Recognises the lipopolysaccharide receptor (LPS R), a 55 kDa protein

QUANTITY : 100 tests

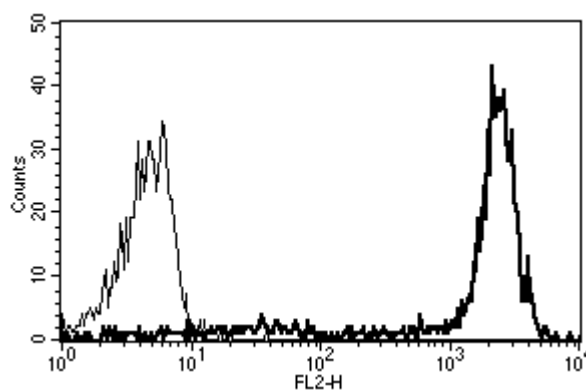
PURIFICATION : Ion exchange chromatography

FORMAT : Phosphate-buffered saline with 5% BSA and 0.1% sodium azide

WORKING DILUTION : Reconstitute with 1 ml deionised water
Use 10 µl to label 10⁶ cells or 100 µl of whole blood

STORAGE : Stable at +2-8°C for six months after reconstitution
DO NOT FREEZE

APPLICATION : Suitable for flow cytometry



A typical staining pattern with the 8G3 monoclonal antibody of monocytes

⚠ Sodium azide is a poisonous and hazardous substance, handle and dispose of properly

Version 2 – 11.06

For research use only