

CD14 Antibody : 8G3 FITC conjugated

HUMAN CD14 FITC CONJUGATED

CATALOGUE N° : 854.771.010

CLONE : 8G3

ISOTYPE : Mouse IgG2a

IMMUNISATION : Monocytes

HYBRIDOMA : Myeloma SP2/O x Balb/c spleen cells

SPECIFICITY : Recognises the lipopolysaccharide receptor (LPS R), a 55 kDa protein

QUANTITY : 100 tests / 1 ml

PURIFICATION : Ion exchange chromatography

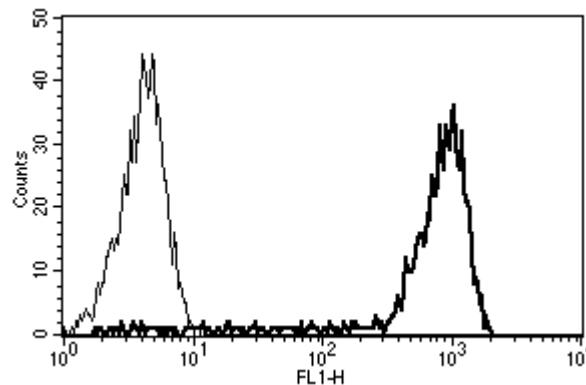
FORMAT : Phosphate-buffered saline with 5% BSA and 0.1 % sodium azide

WORKING DILUTION : Use 10 µl to label 10⁶ cells or 100 µl of whole blood


STORAGE : Stable at +2-8°C for 12 months. For longer storage, freeze aliquots

APPLICATION : Suitable for flow cytometry

REFERENCES : Krzysiek R. et al., J. Immunol., 1999; 162 : 4455 -4463
Krzysiek R. et al., Blood, 2000; 96 : 2338 - 2345
Li C. et al., Cell Growth Differ., 2002; 13 : 27 - 38



A typical staining pattern with the 8G3 monoclonal antibody of monocytes

 Sodium azide is a poisonous and hazardous substance, handle and dispose of properly

Version 2 – 11.06

For research use only