

## CD138 Antibody : B-A38 FITC conjugated

HUMAN CD138 FITC CONJUGATED

**CATALOGUE N° :** 954.071.010

**CLONE :** B-A38

**ISOTYPE :** Mouse IgG1

**IMMUNISATION :** U266 cell line

**HYBRIDOMA :** Myeloma X63/AG.8653 x Balb/c spleen cells

**SPECIFICITY :** Recognises the syndecan-1, the heparan sulfate proteoglycan, a 65-70 kDa protein

**QUANTITY :** 100 tests / 1 ml

**PURIFICATION :** Ion exchange chromatography

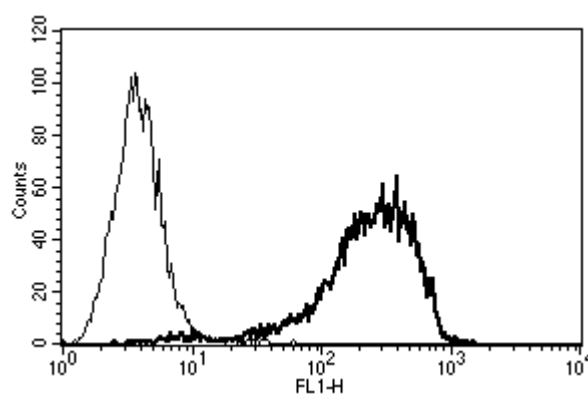
**FORMAT :** Phosphate-buffered saline with 5 % BSA and 0.1 % sodium azide

**WORKING DILUTION :** Use 10 µl to label 10<sup>6</sup> cells or 100 µl of whole blood


**STORAGE :** Stable at +2-8°C for 12 months. For longer storage, freeze aliquots

**APPLICATION :** Suitable for flow cytometry

**REFERENCES :** Cheryath, V. et al., J. Clin. Invest.,2007; 117(10): 3107.7-311



*A typical staining pattern with the B-A38 monoclonal antibody of U266 cell line*

 Sodium azide is a poisonous and hazardous substance, handle and dispose of properly